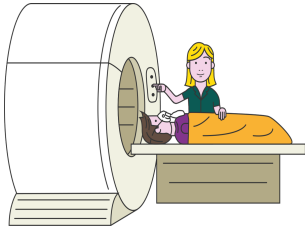




## Therapeutic Radiographer

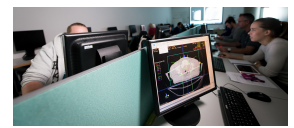


Society of Radiographers  
[Radiography careers](#)  
[Radiotherapy course](#)

### What do they do?

Plan treatments for patients, ensuring the least harm is done to healthy tissue.

**Therapeutic radiographers** take images of the insides of patients' bodies and plan treatments to treat a particular disease. In Oncology, they will be involved in planning a patient's treatment and will consult with doctors', physicists' and other clinical staff.



**Do I need to go to College?**

[Bolton Sixth Form College](#)  
[Thornleigh Salesian College](#)  
[Turton Sixth Form](#)  
[Runshaw College](#)

### College courses:

[University of Salford](#) requires 3 GCE A-levels with 1 science subject at B or above.  
[University of Liverpool](#) requires 3 A-levels at grade B.

### How do I get into College?

Five GCSE subjects at grade C/grade 4 or above including English language, Mathematics and Science.

### Can I get work experience?

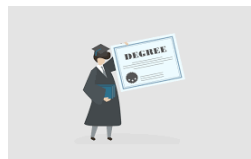
[Plan your NHS career Bolton Hospital Volunteers \(16+\)](#)  
[St. John's Ambulance](#)

### University degree?

BSc (Bachelor of Science) Radiography

### Providers:

[University of Liverpool](#)



### How do I get onto the degree course?

Complete three A-levels and gain at least BBB (including one science).

### How long is the course?

Most courses last 3 years with a 9 month clinical placement.

### Degree apprenticeship?



### Providers (list not exhaustive):

[University of Plymouth](#)  
[University of Keele](#)

### How do I get onto the degree course?

Apply on the [NHS apprenticeships website](#). Enter your postcode and search for [live](#) vacancies. Also see [NHS jobs](#) for general vacancies.

### How long is the course?

The degree is 3 years long. Your time in the NHS will include study days at Uni to allow you to complete theoretical components.